



THREE LITTLE WISHES  
PHOTOGRAPHY

# DEPTH OF FIELD

## DEPTH OF FIELD

Depth of field is another way of describing the focus distance in front of, and behind a subject.

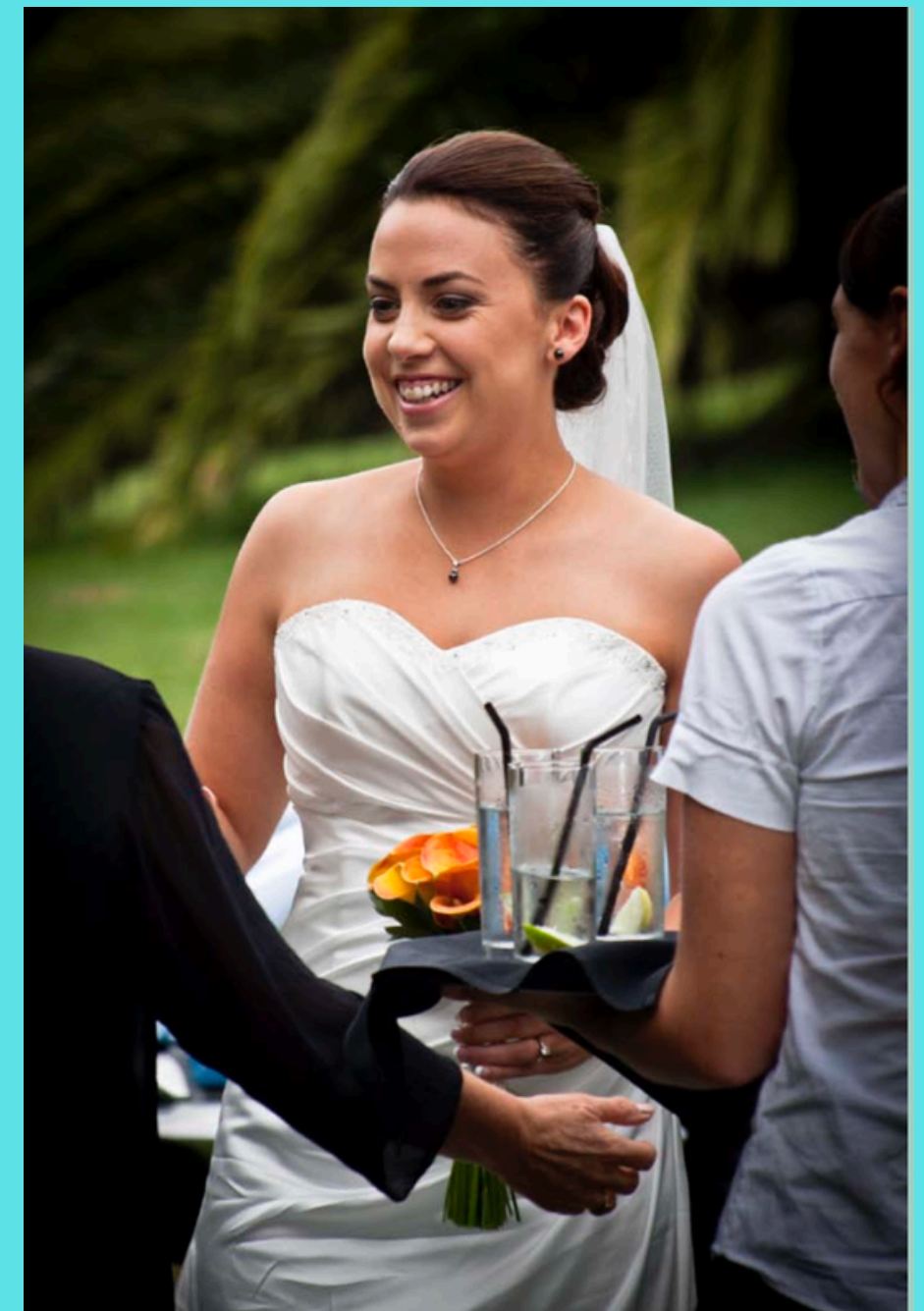
Often a soft blurry background accentuates the sharpness of a subject.

It is most commonly used in macro photography, portraiture and weddings.



Your Depth of field can also decrease by using a telephoto lens and setting the aperture to the widest capable of that lens.

Example:  
A 200 mm lens at f:2.8.

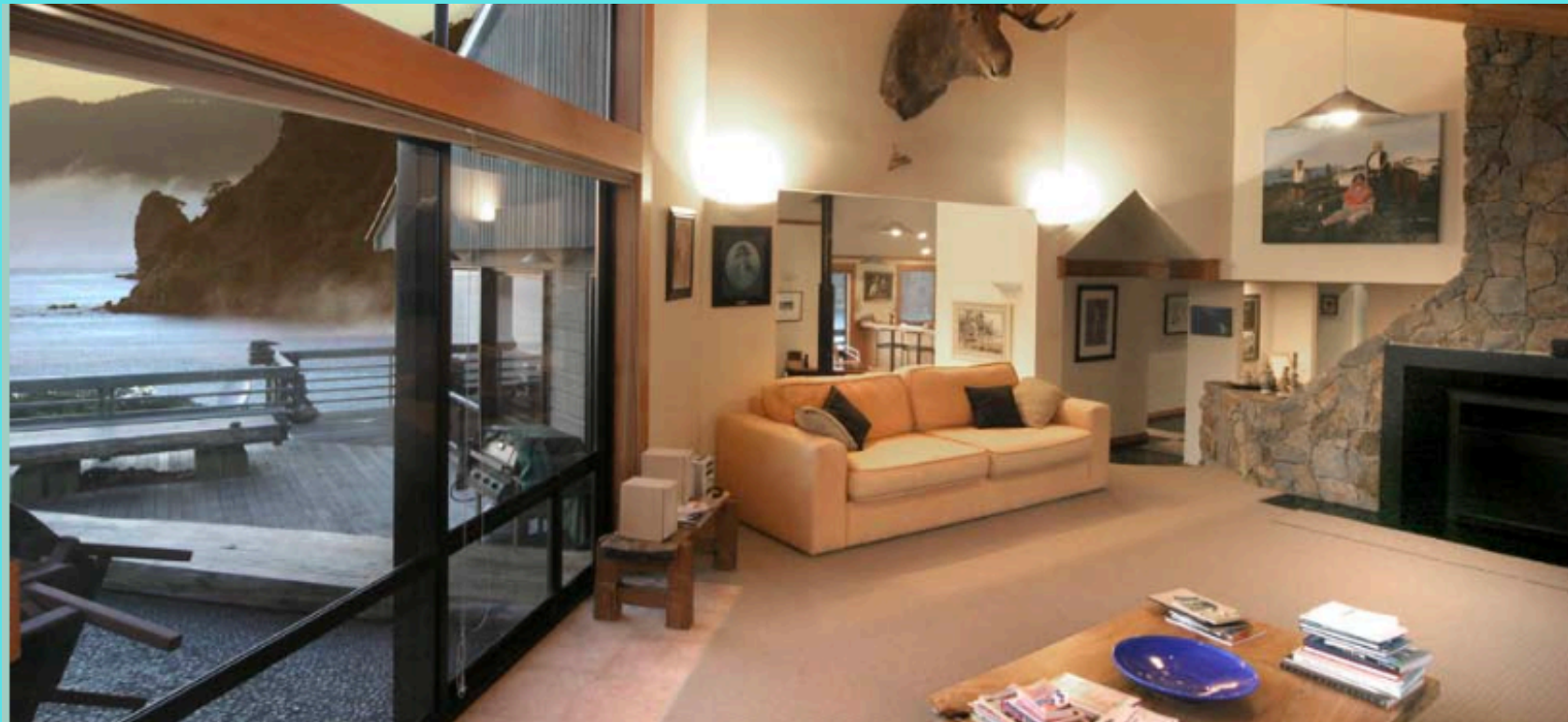


# DEPTH OF FIELD



Depth of field can also be increased to get a number of subject areas in focus, such as products, interiors or group photos.

These are best achieved with wide angle lenses that have good inherent depth of field. Example: An 18 mm lens at most apertures.



Depth of field can also increase by using small aperture numbers such as f:22.

It is also dependant on the camera to subject distance as well as the focal length of a lens, as mentioned above. (A telephoto or wide angle lens).

# USING DIFFERENT APERTURES

The distance from camera to subject is approximately 5 meters. Model's image size remains constant.



# USING DIFFERENT FOCAL LENGTHS

The model's image size in the camera remains constant at each of the three lens settings.

